

# GigE Cameras

## IP Configuration

# Content

Before you start.....	3
How to set the IP address - PC.....	4
Step 1 - Control Panel.....	5
Step 2 - Network Connections.....	6
Step 3 - Local Area Connection Properties.....	6
Step 4 - IP Properties.....	7
How to set the IP address - Camera.....	8

# Before you start

## The material you need

- PC or Laptop with Pentium processor (Dual-Core or higher recommended)
- GigE interface
- Cable to connect the camera to this interface
- Power supply unit for the GigE camera
- A C or CS-mount lens

## Please make sure that you have

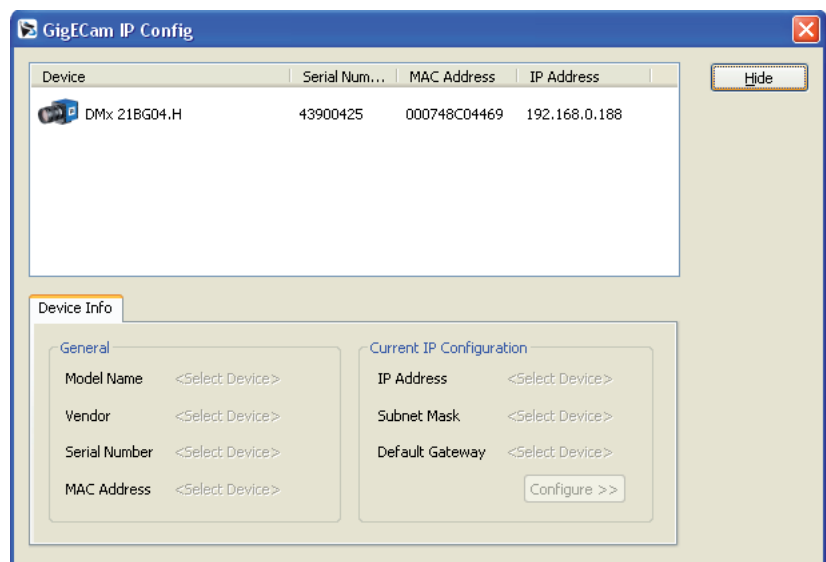
- setup Windows XP/SP2, Windows Vista or Windows 7
- setup DirectX 9.0c or higher
- connected a power supply unit to the camera
- setup a GigE interface
- connected the camera to this interface

## Software

Please insert the included CD and click **English** in the 1st, **Software installation** in the 2nd, **Driver** in the 3rd and **GigE Camears** in the last dialog. Now this Icon should appear in the taskbar:



Please click the icon to open the dialog on the right. The installation was successful if your camera appears similar to the camera shown in this dialog. In case of any problem, please proceed with the next section.



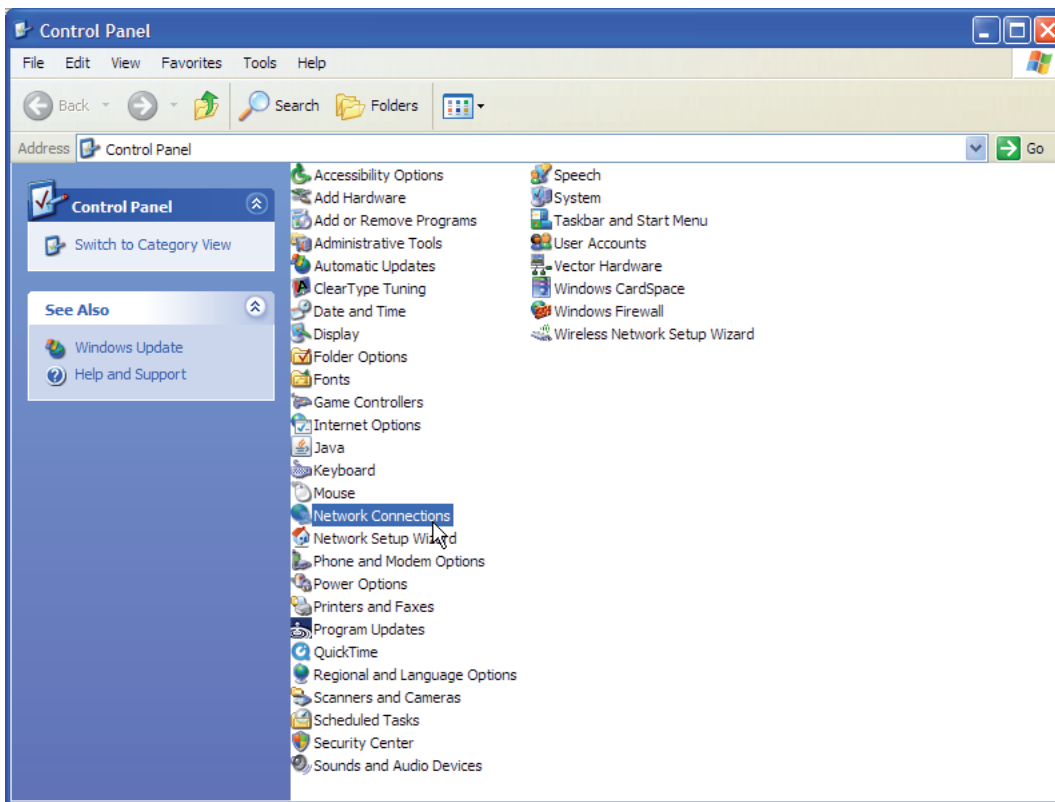
To install the capture tool **IC Capture**, please start again with the dialog **Software installation** and click **Software for end users** and **IC Capture** (please find the serial number on the CD sleeve).

# How to set the IP address - PC

Usually, a PC obtains its IP address automatically from the server in the network it is connected to. This is also true for The Imaging Source GigE cameras. If the network only consists of your PC and your camera there is no server and thus, both devices set the IP addresses by themselves. Some PCs need minutes for this process. In this case, we recommend to set the IP address of you PC manually. Please follow these four steps:

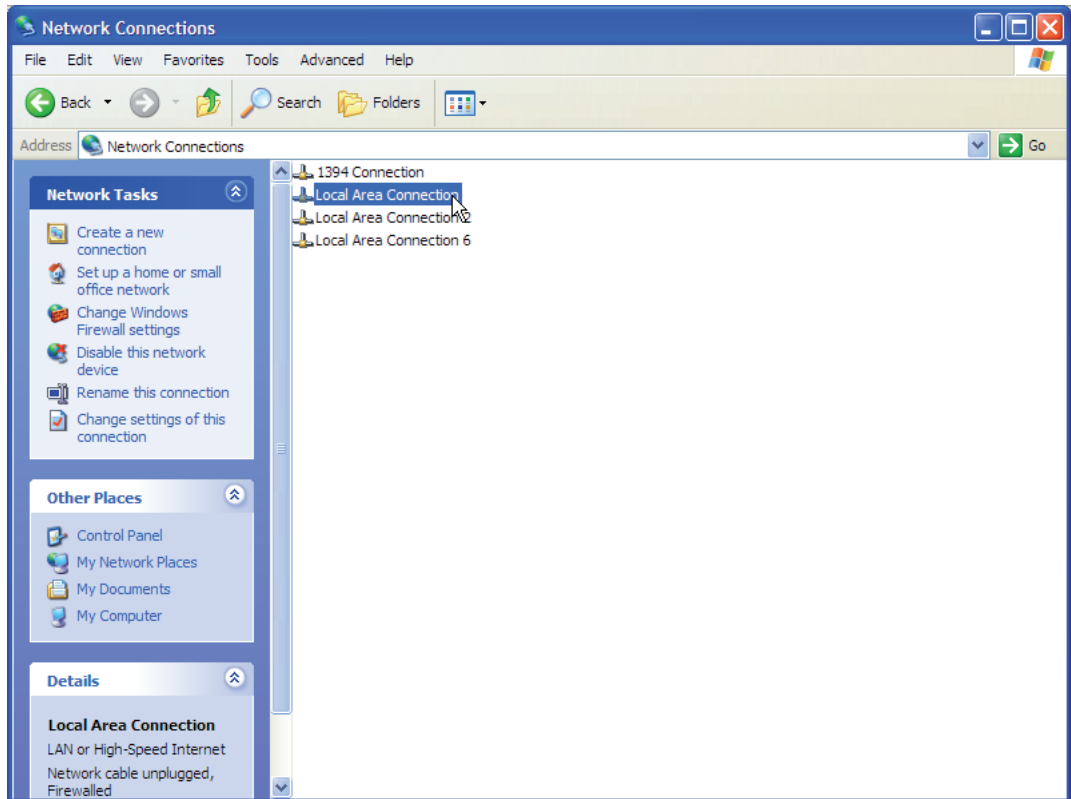
## Step 1

Open the **Control Panel** and double click **Network Connections**:



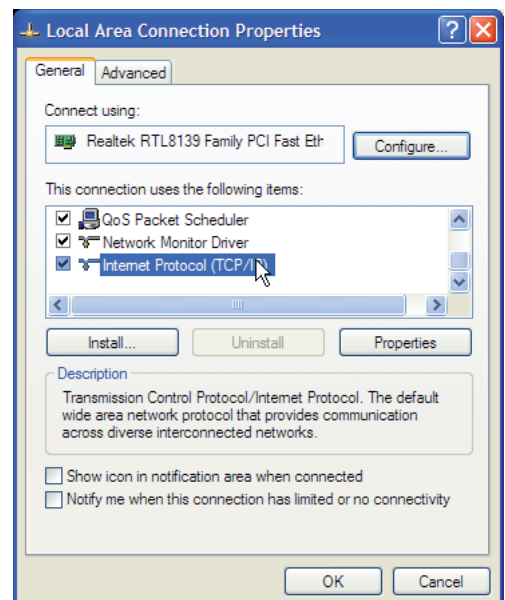
## Step 2

In **Network Connections**, select your network:



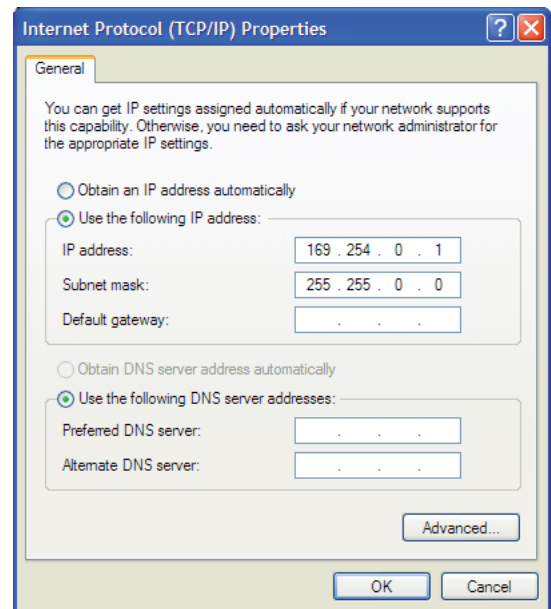
## Step 3

Scroll down to and select the **Internet Protocol (TCP/IP)** and click the Properties button.



## Step 4

Enter the network settings as shown on the right. Now you PC does not obtain the IP address automatically any more but is set to **169.254.0.1**.



# How to set the IP address - Camera

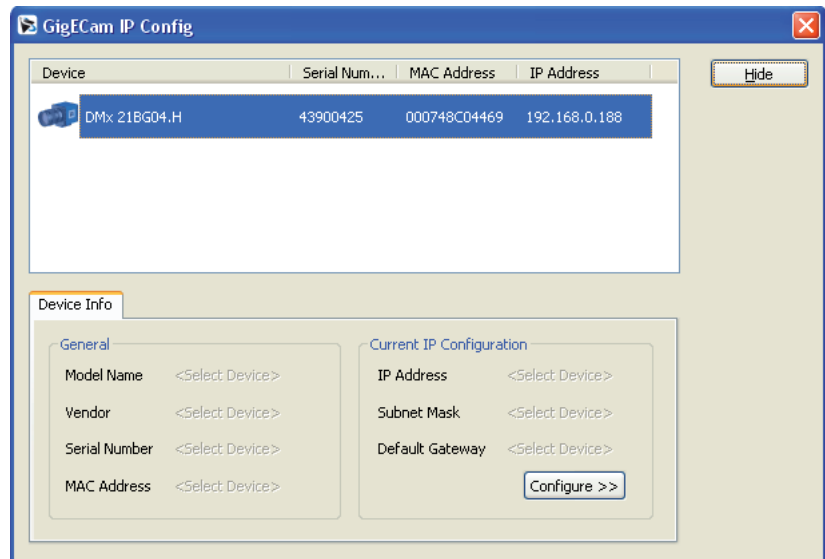
Usually The Imaging Source GigE cameras obtain their IP address from the network server. If no such server exists, they set the IP address by themselves. If you, however, prefer to set the IP address manually, please follow the next two steps:

## Step 1

Open the **GigECam IP Config** tool clicking this icon in the taskbar:

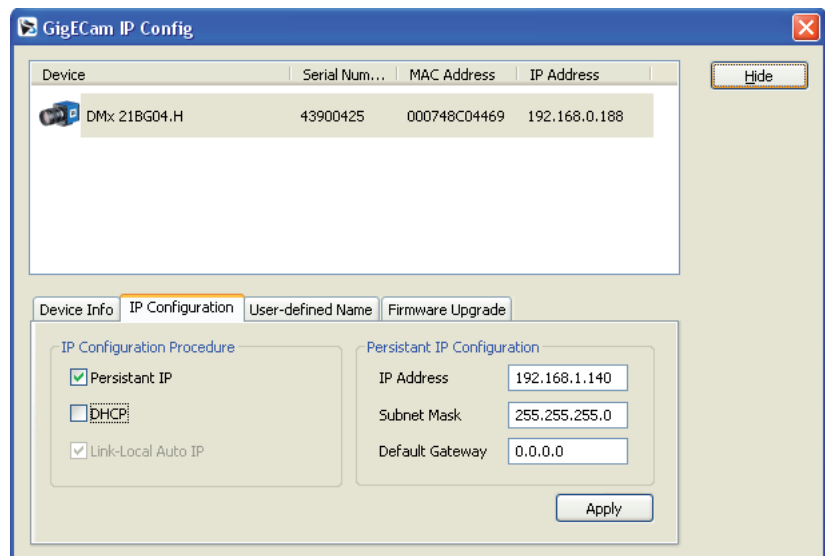


Please highlight the camera whose IP address you need to modify and click **Configure >>**.



## Step 2

Click the tab **IP Configuration** check **Persistent IP**, uncheck **DHCP** and set an IP address that meets your requirements. Complete your configuration clicking **Apply**.





**Headquarters:** The Imaging Source Europe GmbH  
Sommerstrasse 36, D-28215 Bremen, Germany  
Phone: +49 421 33591-0

**North & South America:** The Imaging Source, LLC  
6926 Shannon Willow Rd, S 400, Charlotte, NC 28226, USA  
Phone: +1 704-370-0110

**Asia Pacific:** The Imaging Source Taiwan Co. Ltd.  
6F-1, No.230, Sec.3, Ba-De Road,, Taipei City 10555, Taiwan  
Phone: +886 2-2577-1228  
[www.theimagingsource.com](http://www.theimagingsource.com)

All product and company names in this document may be trademarks and tradenames of their respective owners and are hereby acknowledged.

The Imaging Source Europe GmbH cannot and does not take any responsibility or liability for any information contained in this document. The source code presented in this document is exclusively used for didactic purposes. The Imaging Source does not assume any kind of warranty expressed or implied, resulting from the use of the content of this document or the source code.

The Imaging Source Company reserves the right to make changes in specifications, function or design at any time and without prior notice.

Last update: December 2009

Copyright © 2008 The Imaging Source Europe GmbH

All rights reserved. Reprint, also in parts, only allowed with permission of The Imaging Source Europe GmbH.

All weights and dimensions are approximate. Unless otherwise specified the lenses shown in the context of cameras are not shipped with these cameras.